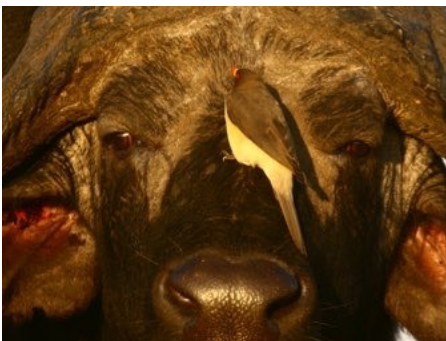


PRIVATELY GUIDED SAFARI

BARCLAY STENNER
Luxury Safari Expeditions





SAFARI OVERVIEW

BOTSWANA

Day 1

Arrive Maun International Airport, Botswana
Fly with lightweight aircraft to Khwai Airstrip
Luxury Mobile Safaris Camp (3 nights)

Day 2 & 3

Moremi Game Reserve
Luxury Mobile Safaris Camp

Day 4

Drive through Moremi Game Reserve and then boat trip
through the Okavango Delta
Lightweight Expeditionary Camp (1 night)

Day 5

Boat to camp in Moremi Game Reserve
Luxury Mobile Safaris Camp (3 nights)

Day 6

Moremi Game Reserve
Luxury Mobile Safaris Camp

Day 7

Moremi Game Reserve
Luxury Mobile Safaris Camp

Day 8

Fly with lightweight aircraft to Maun
International departure via Johannesburg

ABOUT YOUR GUIDE/HOST



JOHN BARCLAY

John Barclay, raised in Botswana from a toddler, heralds from a long line of African pioneers and adventurers. His first safari to the Makgadikgadi Salt Pans, aged 5, found him digging up a nest of Africa Rock Python newborns assisted by his caretaker, a bushman named Cobra. John's family has guided African safaris for five generations, the first guide in the family being his maternal great great grandfather, Major Richard Granville Nicholson, who escorted Princess Eugenie to see her son's grave and the site where he was killed in the Zulu war on the 1st June 1879.

John's passion for the stunning dunes and deltas of the Kalahari Desert, their inhabitants great and small and the Ju/hoasi Bushmen began as a youngster where; on an exhilarating clear and cold night spent out in the Kalahari Desert with a broken down safari car, a mumbling lion researcher and under the watchful eyes of a pride of 7 lions he helped repair the tyre and then unroll his bedroll and fall peacefully asleep under the vehicle, happy days. On John's father's side, the Barclays arrived in South Africa in the 1840s. John's Dad, an engineer, was the safari equipment tinkerer and his Mum, growing up with two leopards and a banded mongoose as pets, could tell an incredible story. She was the care-giver and would often make nursing miracles bringing all sorts of wild animals back from near-death to full health. John grew up around the safari industry. John's uncle; Ralph Bousfield, owner of Jack's Camp in the Makgadikgadi Salt Pans and rated as Africa's top guide is his mentor. Ralph's respect for and knowledge of the Bushmen and the Kalahari environment rubbed off on John from very early on in his career and John had the great fortune to spend many exciting safaris learning from Ralph.

After graduating from Rhodes University John flirted for a year with a 'real' job in London but decided to trade his desk in for an exciting guiding career with his Uncle Ralph at Uncharted Africa leading the Uncharted Africa Mobile Safaris Expeditions into the most adventurous corners of the incredible country of Botswana including the wonderful Okavango Delta, the stark Makgadikgadi Salt pans and the wide expanses of the Central Kalahari. Under the guidance of Ralph he carved a name for himself as a guide and achieved substantial recognition within the safari industry leading his previous mobile safari team to win the coveted Good Safari Guide Award - Best Mobile Operator in Africa twice! John was featured in *Conde Naste Traveller*, *Elite Traveller* and the *Robb Report*, and was quoted and defined as "a young Robert Redford" by *Gala Magazine*, June 2012. His favourite thing to do whilst in the bush is to find a hidden spot by a likely waterhole, and wait and observe the interesting behaviour of whomever comes down to drink and learn something new.



ABOUT YOUR GUIDE/HOST

JAMES STENNER

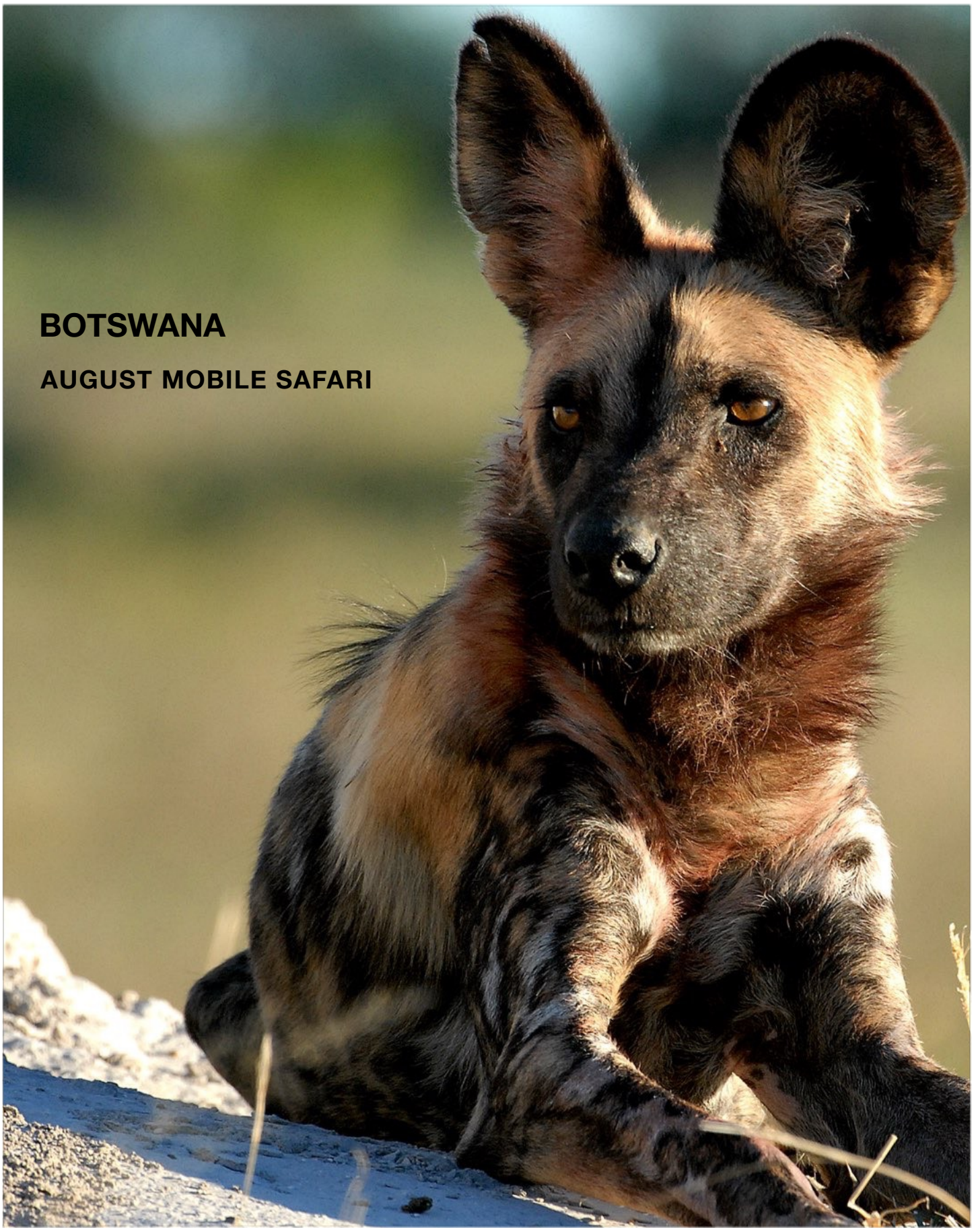
From a young age, growing up in Northumberland in the North East of England, James dreamt about the 'Wild Continent' and always took great interest in African wildlife. Born into a family of English traditions with an adventurous rural upbringing, during his childhood years James was often to be found at sea, racing his family yachts in international competitions.

James has a colourful family history, descending from his Great Great Grandfather 'Hexham Jack' a famed bear wrestler and travelling circus legend. James takes his passion of photography from his Grandmother, who was a leading fashion and landscape photographer for Vogue Magazine in post-war Europe. James has always been a nature and wildlife fanatic and prior to arriving in Botswana lead an active and diverse life rising through the creative events industry in the UK and Australia. Due to his upbringing in a large and lively family, it is in his nature to warmly engage with people and make them feel at home straight away.

James was privately educated in England and following graduation from university spent 9 years circumnavigating the Australian continent, fundraising for a national charity in between running a weekly radio show and documenting his adventures for a well know travel website.

BOTSWANA

AUGUST MOBILE SAFARI



MONTH TO MONTH TRAVEL CALENDAR

BOTSWANA

AUGUST

- The herds are getting larger and space near the water leads to tension between the breeding herds of elephant and the nights are filled with the sounds of elephants grumbling and trumpeting.
- The bush is bare and the dust pervades, but the action is around and with patience and perseverance, the rewards are great. The floods have passed through the Delta, and now reach Maun – leading to much excitement for the locals in town and water related speculation is at its peak – how high? when will it stop? How far will it go?
- The weather is warming, even at night, with daytime peaks averaging closer to 30°C now and night time averages rising to 10°C.
- Another special time and peak visitor season.
- The herons, storks and other birds start to congregate in Moremi and begin nest building.



OKAVANGO DELTA

BOTSWANA

The Okavango Delta in northern Botswana, covers 20,000 square kilometres and is the largest inland delta in the world. Flowing for approximately 300 kilometres from the pan handle in the north to the Thamalakane River in the south, the water is crystal clear, naturally filtered by the sand and aquatic vegetation that forms the delta's basin.

The delta is a natural phenomenon and is relatively young in geological terms. The source of this African oasis is in Angola, entering Botswana 1,600 kilometres later as the Okavango River. Here the fate of the flow is determined by a series of parallel fault lines. As it passes over the first, it splits and fans into a number of waterways and channels that from space look like the fingers of a giant hand. The second and third fault lines act as a natural bund guiding the flow down their length until reaching Maun.

The view from the air is one of breathtaking magnificence, a maze of meandering channels, papyrus reed walls and intermittent palm islands - a paradise encircled by the sands of the Kalahari. This dynamic ecosystem, in which today's channels may be the islands of tomorrow, provides a permanent and seasonal home to prolific bird and wildlife. Spectacular herds of elephant roam, buffalo graze, antelope species congregate under the watchful eye of predators such as lion, hyena, leopard and the less common cheetah and wild dog. This is a truly remarkable area for bird watching, game viewing and photography.

Through the signature cry of the fish eagle under clear African skies, the Okavango Delta extends an open invitation to indulge in its mystery. The thrill of exploring its wild corners by game drive vehicle, the intimacy and unique connection of rambling on foot, and the sheer peace of floating in a mokoro amidst the large leaves of lily scattered lagoons, all experiences without parallel.



MOREMI GAME RESERVE - KHWAI AREA

BOTSWANA

Still a part of the Okavango Delta and bordering the Moremi Game Reserve, lies the Khwai River. The bridge over the river Khwai is a very special piece of history as John's grandfather helped to build the original, the remnant leadwood posts can still be seen as you cross the bridge. The Moremi Game Reserve was the first wildlife sanctuary ever created by a resident African tribe, the BaBukakhwe who no longer hunt in the area. Instead their community relies on income derived from tourism and once you see the beauty of the game rich Khwai floodplains you will agree that was a great decision. This tribe come from the nearby Khwai village.

Wildlife species that can be found include elephant, jackal, buffalo, southern giraffe, Burchell's zebra, greater kudu, lion, leopard, cheetah and spotted hyena. A large wild dog and hyena population occur here, and in June/July when the hyena and the wild dogs seek out a new den site the community keeps a close eye on them reporting back their chosen secret spot which provides us with a glimpse into these incredibly rare predators. The birdlife here is prolific.

Due to the density of the plains game in the open floodplains, the predator counts is almost unnaturally high and Khwai is known to have the highest density of leopard anywhere in Botswana. Exploring a track with the Khwai river on the one side and riparian bush packed with countless animals on the other side of you - and not knowing which way to look is a pleasure inducing overload of all one's senses.





DAY 1, 2, 3

Arrive Maun International Airport, Botswana
Fly with lightweight aircraft to Khwai Airstrip
Luxury Mobile Safaris Camp (3 nights)

On landing in Maun, you will be escorted to your plane where you will fly directly to Khwai airstrip where John will be waiting for you with the safari car. Check into the Moremi Game Reserve for a week, to explore the mosaic habitat of Africa's greatest National Park.

Our mobile camp, which provides a true experience of the land without sacrificing comfort, is set in a beautiful glade of lead wood trees in a lovely setting of secret pools and open grasslands. At night we gather around the campfire under a luminous canopy of stars, share stories, and enjoy the camaraderie of the safari experience. Our campsite is ours alone—though we are sometimes joined by hippos that come out at night to feed on the grass near our tents—and the enchanting sound of bell frogs serenades us to sleep.



PRIVATE CANVAS

No safari is complete without time spent under canvas in the style of the old explorers. Our private mobile-tented camp allows us to visit some of the most beautiful and remote wilderness areas in Botswana, unhindered by any schedule or crowds of other people. The camp gives us the flexibility to position our camps for the best game viewing possible.

Designed from decades of experience, your mobile camp provides the ultimate in luxurious exclusivity whilst allowing for an intimate wildlife experience. Each of the traditional canvas tents have en-suite flush toilets and showers and are insect proof. Meals are taken in a central dining tent and are freshly prepared according to your family's needs. A full crew of exceptional safari staff are there to look after your every need, whether it is preparing a beautifully laid dinner under the stars or a piping hot shower upon return from your afternoon's adventures. For those who want to be kept active during their time in camp, activities range from photographic workshops, to learning about Botswana's wildlife, birdlife, and people.







“The professional set-up and the hospitality of your camp are as wonderful as any 5 star hotel in the world”

TAYLOR SWIFT - PERSONAL EMAIL TO BARCLAY STENNER





DAY 4

Boat trip through the Okavango Delta

Luxury Mobile Safaris Fly - Camp (1 night)

We will boat through gentle waterways of the Okavango in a 20-foot aluminum boat with outboard and roof to a remote unnamed island in the heart of the delta. This region offers a contrasting experience to the vehicle based activities of Moremi. We will base ourself on this island for a night with an adventure camp. Accommodation will be in 2-man mosquito tents with a separate safari toilet and safari shower. Meals will be cooked by our chef and dining will be outdoors at our dining table.

Here we will explore by boat and on foot, looking behind the scenes so often missed in a vehicle to learn about how the ecosystem works up close, while the hundreds of birds add to the feeling of serenity in one of the Okavango's least-explored areas. We will see wildlife along the way including elephant, hippo and lechwe. We are less likely to see predators but on occasion, lion.



MOREMI GAME RESERVE

BOTSWANA

Covering most of the northeastern part of the Okavango Delta, the Moremi Game Reserve is a very special piece of protected wilderness - the first wildlife sanctuary ever created by a resident African tribe. Proclaimed by the Batawana community in 1963, Moremi is a magical microcosm of the delta that surrounds it – 1,160 square miles (3,000 square kilometers) of deep lagoons and waterways bursting with life of every description. It is the most diversified of all the parks in terms of habitat, from riparian woodland, floodplain, reed beds, permanent wetland to mopane forest and dry savanna woodland. The reserve contains within its boundaries almost 20% of the Okavango Delta. Wildlife species that can be found include elephant, jackal, buffalo, southern giraffe, Burchell's zebra, greater kudu, lion, leopard, cheetah and spotted hyena. The reserve also has a large wild dog population. Wildlife in the floodplains include red lechwe, ostrich, crocodile, hippo, tsessebe and roan antelope. The birdlife here is prolific.

In the driest months of September and October, as the river channels diverge and become smaller, more land appears above the seasonal floodwaters. Small islands gradually appear - big enough only to support a bee-eaters' colony at first, but becoming large enough downstream to offer resting points for larger herds of buffalo and elephant. This is also some of Africa's finest bird watching territory, particularly the heronries on Gadikwe and Xukanaxa lagoons. In the north of the reserve, the permanent swamplands provide the perfect habitat for the sitatunga - as well as perfect fishing for the famously fierce Tiger fish.

In the eastern part of the reserve, the only portion of the park that is navigable by vehicle, the rivers spill the last of their vital waters into the parched sands of the Kalahari. Here, vast riverine forests stretch north to Chobe National Park, where they provide sanctuary and sustenance to the largest elephant population left on earth.





DAY 5 - 7

Boat back down the channel and meet up with our safari car again

Luxury Mobile Safaris Camp (3 nights)

Moremi Game Reserve

Departing the island by boat, we will find ourselves back where we left our vehicles after a couple of hours. We will drive to our new campsite in the Moremi Game Reserve where our same camp that has moved from Khwai now awaits us with a warm face towels and a cold Gin and Tonic.

Here, we will explore this different landscape, more permanent delta, marginal floodplains and big game country and wildlife in the area with our safari car. This is James and John's backyard. Also home to elephant, buffalo, lion, leopard, cheetah, and the rare wild dog, along with exceptional populations of birdlife and raptors. This area has typically more water than where our camp was in Khwai, providing us with varied topography and opportunities for a swim...





DAY 8

Fly back to Maun

International departure

We will say goodbye to our crew and fly by private charter aircraft to Maun. Here you will connect with your flight to Johannesburg and your international connection back home.

“All I wanted to do now was get back to Africa. We had not left it yet, but when I would wake in the night I would lie, listening, homesick for it already”

ERNEST HEMINGWAY, GREEN HILLS OF AFRICA



SAFARI COST

Per person cost based on:

3 nights at luxury mobile safari camp - Moremi Game Reserve

1 night at lightweight Island safari camp - Moremi Game Reserve

3 nights at luxury mobile safari camp - Moremi Game Reserve

Flights from Maun to Khwai and from Moremi Game Reserve to Maun as per itinerary

Total per person based on flying: \$9950.00

This cost includes:

Professional private guide (John Barclay) and exclusive use of vehicle throughout your mobile sections of safari

Private camp throughout your mobile sections of safari

Full board accommodation and all meals

All private charter flights as described in the itinerary

All drinks including soft drinks, beer, house wine and spirits

Laundry service

All game drives and park fees

Flying doctor emergency evacuation

This cost does not include:

Anything of a personal nature

International flights including flights from Maun to Johannesburg, and Johannesburg to Victoria Falls

Trip cancellation and health insurance

Any options not described in the itinerary

Visa and passport fees

Gratuities

SAFARI TERMS AND CONDITIONS

Bookings and Payments

All safaris are booked on a 'first-come, first-served' basis.

Booking Fee

Due to the individual nature of our safaris, a non-refundable booking deposit of 20% must be received before your safari dates can be confirmed. This fee is non-refundable and it will be deducted from the total amount payable for the safari.

Payments

- The final payment is due 30 days before your safari departure date.
- Checks should be made payable Barclay Stenner. Payment by bank wire transfer is preferred. Credit cards are not accepted.

Cancellation

The booking deposit is a non-refundable booking

From 30 days to your departure date there is a 100% cancellation fee

Your itinerary and costing is subject to change in the event of exceptional cost increases such as fuel surcharges and park fees, or extreme currency fluctuations.

Risks and Insurance

While participating under Barclay Stenner arrangements with our safari operators, certain unavoidable risks and dangers may occur, including but not limited to: accidents, illness, travel by air, automobile, or other conveyance, wildlife and the forces of nature.

You will be in isolated, rugged and wilderness terrain, often away from medical facilities, and involved in activities that are potentially dangerous such as: climbing, game spotting, horseback riding, canoeing, and nature walks.

Neither Barclay Stenner, nor our safari operators accept responsibility or liability for any injury, loss or damage suffered by any person or property from any cause whatsoever.

We do, however, make all our clients members of a medical air evacuation service, which if conditions are right, will provide an emergency air ambulance evacuation to the nearest hospital.

Neither Barclay Stenner nor its operators accepts responsibility for any delay prior to or during the course of our safaris brought about by strikes, weather conditions or any other circumstances beyond our control. If Barclay Stenner judges any destination to be unsafe it will offer to reschedule, relocate, or refund your trip. If field conditions should not be optimum due to weather conditions, operators reserve the right to change the itinerary at any time.

All individuals come on safari at their own risk and must therefore provide their own travel, health and accident insurance coverage during the safari. In addition, we strongly advise guests to take out cancellation insurance to cover any possibilities of personal health or family matters that would result in the inability to travel.